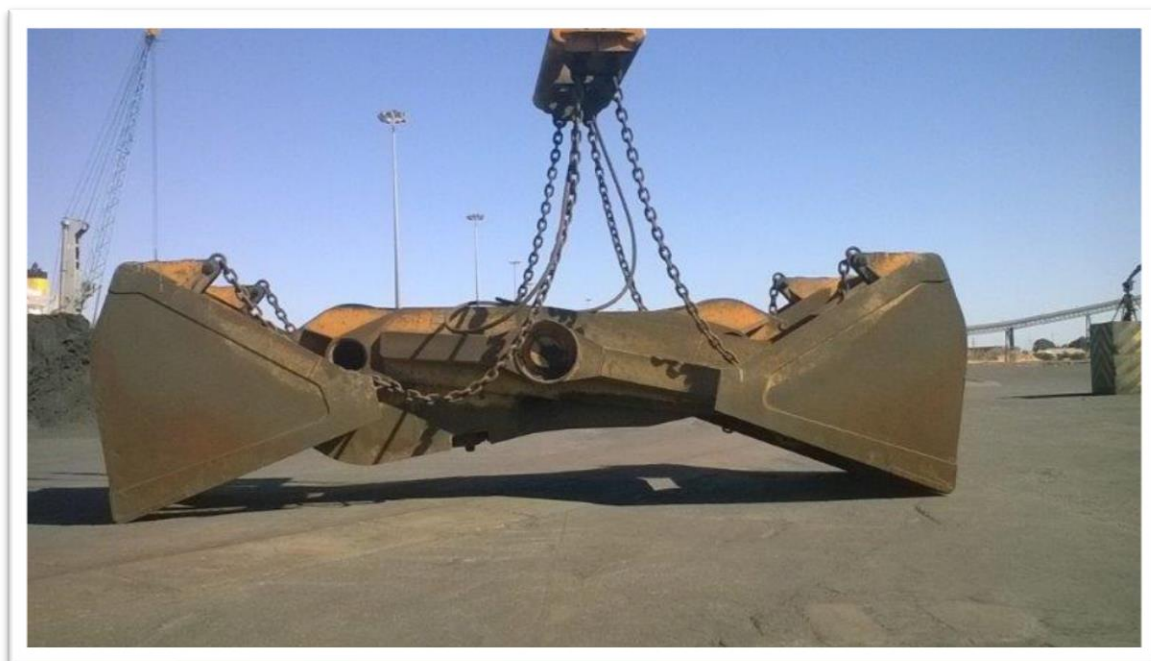




Scissor Grab 70,0-2,2-21000



YEAR:	2008
CAPACITIES:	21 m ³
BULK WEIGHT:	2,2 t/m ³
PERMISSIBLE LOAD CAPACITY:	46,2 t
NECESSARY LOAD CAPACITY CRANE:	70,4 t
GOOD WORKING CONDITIONS	



Scissor Grab 70,0-2,2-21000

