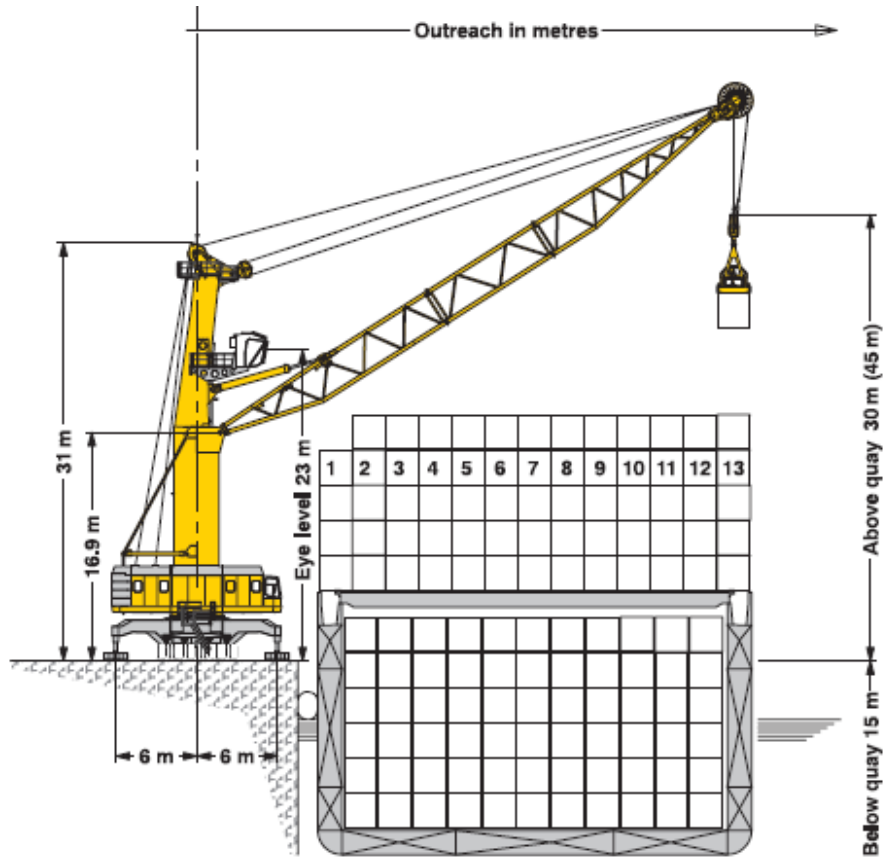




Liebherr LHM 320



YEAR: 1998

LIFTING CAPACITIES: 104 T

WORKING HOURS: approx. 22.000

4 ROPES



Liebherr LHM 320

RADIUS	LOAD CURVE 75% HL	75% LOAD CURVE 75% NL	FOUR ROPE GRAB
[m]	[t]	[t]	[t]
10,5	104,0	52,0	34,7
11	104,0	52,0	34,7
12	104,0	52,0	34,7
13	104,0	52,0	34,7
14	104,0	52,0	34,7
15	104,0	52,0	34,7
16	104,0	52,0	34,7
17	104,0	52,0	34,7
18	102,7	52,0	34,7
19	94,9	52,0	34,7
20	88,1	52,0	34,7
21	82,1	52,0	34,7
22	76,8	52,0	34,7
23	72,0	52,0	34,7
24	67,8	52,0	34,7
25	64,0	52,0	34,7
26	60,5	52,0	34,7
27	57,3	52,0	34,7
28	54,4	52,0	34,7
29	51,8	51,8	34,7
30	49,3	49,3	34,7
31	47,1	47,1	33,5
32	45,0	45,0	32,0
33	43,0	43,0	30,6
34	41,2	41,2	29,3
35	39,5	39,5	28,1
36	37,9	37,9	27,0
37	36,4	36,4	25,9
38	35,0	35,0	24,9
39	33,7	33,7	24,0
40	32,4	32,4	23,0
41	31,3	31,3	22,3
42	30,1	30,1	21,4
43	29,1	29,1	20,7