

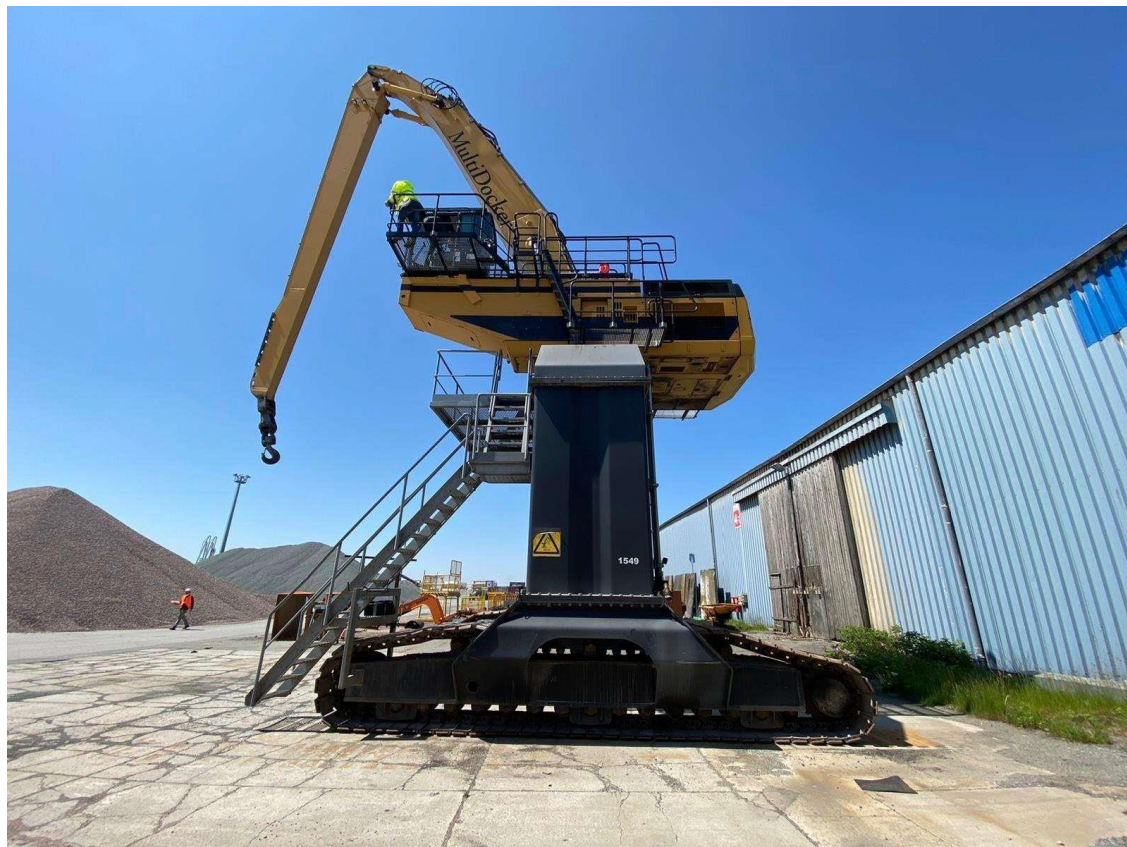


BENDEZU
PORT
EQUIPMENT

Bendezu Port Equipment

MAQUINARIA PORTUARIA DE SEGUNDA MANO – USED PORT EQUIPMENT FOR SALE – GEBRAUCHTE HAFENTECHNIK

Multidocker CH74 D



YEAR: 2012

WORKING HOURS: 4.500 hours

REACH: 22,6 m

ventas@suministrosportuarios.com

info@bendezu.com

+34 679 449 189

+49 176 727 176 54



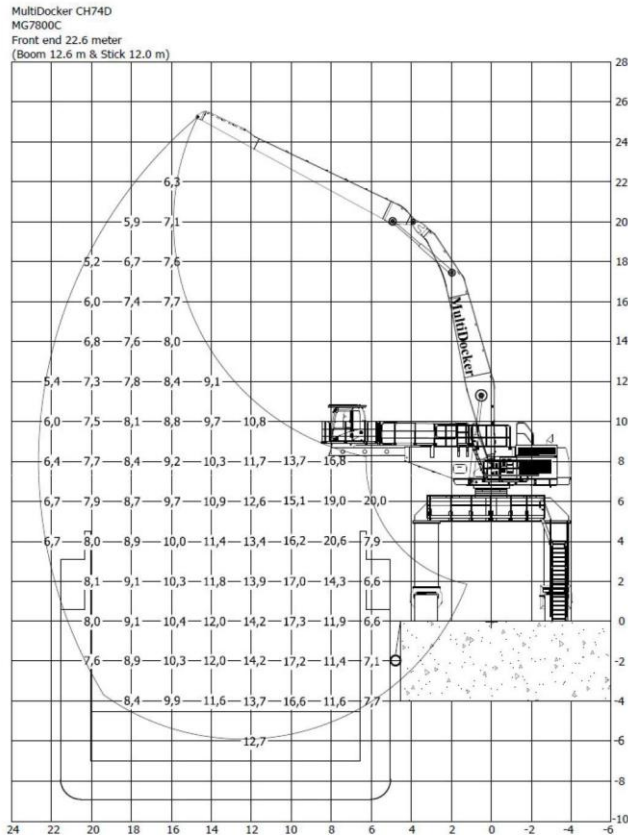
**BENDEZU
PORT
EQUIPMENT**

Bendezu Port Equipment

MAQUINARIA PORTUARIA DE SEGUNDA MANO – USED PORT EQUIPMENT FOR SALE – GEBRAUCHTE HAFENTECHNIK

Multidocker CH74 D

MultiDocker®



Lifting capacity table, unit tonne = 1 000 kg

The lifting capacities are measured at 360° in the stick end-joint. The above values have been calculated in compliance with SS-EN 13001. They do not exceed 87% of the hydraulic lifting capacity or 75% of the tipping load, with the machine on firm, level ground.

MultiDocker Cargo Handling AB, Sällångsgatan 15, SE-602 22 Norrköping, Sweden Phone +46 (0)11 450 3000,
Fax +46 (0)11 450 3010, Org.No 556149-1860 e-mail info@multidocker.com, www.multidocker.com

ventas@suministrosportuarios.com

info@bendezu.com

+34 679 449 189

+49 176 727 176 54